



**Alser Forest**

**Soluții forestiere complete**

# Company Presentation

## Wood Harvesting

[www.utilajedepadure.ro](http://www.utilajedepadure.ro)







# COMPLETE FORESTRY SOLUTIONS



**Alser Forest**  
Soluții forestiere complete

## » General Presentation

» About us

» History

» Mission

» Team

## » Wood Harvesting

» Harvesters

» Harvester Heads

» Forwarders

» Forestry Trailers

» Skidders

» Combi machines

» Skylines

» Yards

» Mini-skidder

» Log lines

» Chippers

» Mulchers and Tillers

» Forestry Winches

» Cables

» Forestry Tyres

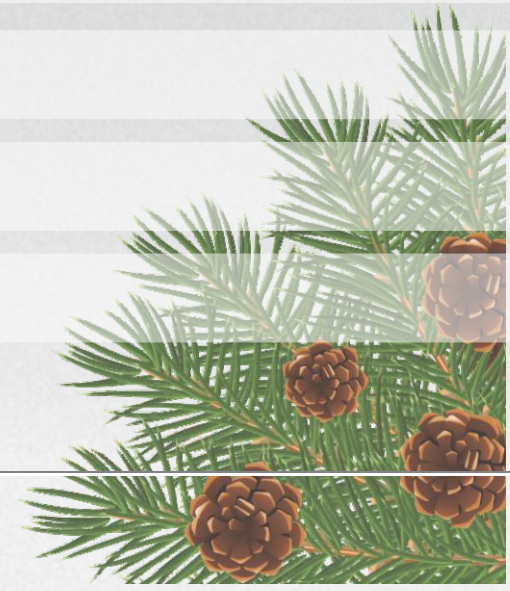
» Chains

» Tracks

## » After Sale Service

## » Consultancy

## » Contact





## About us



**Alser Forest**

Soluții forestiere complete



Alser Forest SRL is a Romanian private capital commercial company with the main purpose of selling machines, equipment and installations for forest harvesting and wood processing.



## History



**Alser Forest**

Soluții forestiere complete



In 2004, at the initiative of Mr. Albert Șerban the Prime Resources Oy company is founded in Espoo, Finland. Starting with this date, in partnership with Indufor Oy, Prime Resources Oy begins to offer consultancy and forest management services in Finland, the European Union and Asia.

Romania was one of the beneficiaries, during the 2004-2008 period several projects were developed and implemented for the forestry sector. This relatively long period led to identifying several weaknesses in the process of forestry development, from which the biggest being the incapacity of harvesting the whole wood mass approved, mainly because of the lack of modern technical equipment and materials available to the subcontractors.

This led in 2008 to the opening of a sister subsidiary Alser Forest SRL in Romania, which presently holds, as a main object of activity, the distribution of modern machinery, installations and forestry equipment which substantially contributes to a more efficient economic activity and environment protection.



## Mission



**Alser Forest**

Soluții forestiere complete



Our goal is to make the brands that we represent in Romania the most well-known and utilized producers of machinery installations and equipment in the forestry sector. We are the exclusive representatives of several well-known brands which certifies high quality standards for the services we provide to our clients. To further insure these standards we offer both sale and after-sale services which include technical, technological and economic consultancy based on the experience, knowledge and professionalism of our engineer team. These provide plus value for the customer and recommends us as the top solution in the field of forestry in the Romanian market.

We aim to further develop relationships with high quality brands in order to provide a wider scope of solutions for the forestry sector in all its forms.

We believe that the forest should be seen as an ecosystem, not just as a wood provider. For this reason we do our best in promoting the sustainable forestry management concept, convinced of the fact that only a well-designed and a well-made forestry harvesting logging process can insure that the next generations will have wood resources and enjoy a healthy and charming environment.



## Team



**Alser Forest**

Soluții forestiere complete



Our team is made of well-trained technical, technological and economic specialists with a rich experience in the forestry area.

You will find in us the optimal business partner which will always help you make the best professional choice in order to fulfill your business goals.

Through our mobile teams of technicians we provide on-site maintenance, upkeep and repair services for all the delivered machinery, equipment and installations, in both the warranty and post-warranty period.



# Harvesters



**Alker Forest**  
Soluții forestiere complete



Harvesters are forestry machines designed for the process of harvesting wood from stands which offer primary round wood assortments (final feelings) or secondary products (thinnings).

This type of machinery is used on a wide scale across the world, mainly in the Scandinavian wood harvesting industry. It is also successfully used in Romania where the exploitation conditions are often harsher. Large production capacities can be gain with this kind of machine when the cut-to-length method is used.

The optimal technological method of exploitation requires the harvester to be paired with a forwarder, when short wood is hauled to the landing site.

The Harvester line from our portfolio for the Romanian market comes from the forestry division of Komatsu, known until a few years ago as Valmet.

For more information please visit the official Komatsu Forest website:  
[www.komatsuforest.com](http://www.komatsuforest.com)

**KOMATSU**  
**Forestry Quality™**



# Harvester Heads



**Alser Forest**  
Soluții forestiere complete



This hydro-mechanic equipment is attached to specialized harvesting forestry machines, excavators both with wheels and on tracks and are operated by an electronic computer. It fulfills all the processes of harvesting the wooden mass from cutting to delimbing, debarking and cutting the logs to size.

Alser Forest exclusively sells harvesting heads from two manufacturers: Komatsu Forest and Kesla. Each model sold on the Romanian market matches the technical and functional specifications of the harvesting environment, beginning with the species of trees (coniferous or broad-leaved), the almost simultaneous cut from two sides of the round wood trunk and further finishing with setting the required cut length.

For more information please visit the official Komatsu Forest website: [www.komatsuforest.com](http://www.komatsuforest.com) or the Kesla official website: [www.kesla.fi](http://www.kesla.fi)

**KOMATSU**

**Forestry Quality™**

**KESLA**



# Forwarders

**Alser Forest**

Soluții forestiere complete



Forwarders are articulated forest machines whose main build features include the presence of a hydraulic crane and a height adjustable bunk structure which allows collecting and hauling fully suspended the whole round wood from thinnings and final cuttings.

This machine has a long history being in use mostly in the Scandinavian countries (Norway, Finland and Sweden) and North-America (USA and Canada) because of its high efficiency and economic value that it offers especially in the forest exploitation which employ the cut-to-length method.

In the context of Romania's forestry conditions, the forwarders represent a solution which offers a high degree of protection to the forest ecosystem, especially in areas where hauling is done on long distances and the harvesting technology implies also a skidder, skyline or yarder. In these specific conditions hauling short logs is possible only by implementing an intermediary step of sectioning the long trunks.

High productivity is assured when working in tandem with a harvester, mainly when the collecting of the round wood is done in the form of short logs.

The forwarder line present in the Alser Forest portfolio is from Komatsu Forestry.

For more information please visit the official Komatsu Forest website:

[www.komatsuforest.com](http://www.komatsuforest.com)

**KOMATSU**  
**Forestry Quality™**



# Forestry Trailers



**Alser Forest**

Soluții forestiere complete



Forestry trailers are equipped with a hydraulic crane for loading and unloading the round wood. They represent a cheaper alternative to the forwarder, especially in the hill areas of forest exploitation, where the slopes are moderate or in areas with young trees, where access with heavy equipment is harder.

This attachment is towed by an agricultural tractor modified for forestry purposes, whose power represents the most important part when choosing the type and load capacity of the trailer.

High productivity when using a forestry modified tractor in tandem with a trailer is achieved especially when harvesting short logs. If long logs harvesting is required a supplementary sectioning operation has to be added.

Alser Forest sells on the Romanian market forestry trailers from Finnish manufacturer Kesla.

For more information please visit the official Kesla website: [www.kesla.fi](http://www.kesla.fi)





# Skidders



**Alser Forest**  
Soluții forestiere complete

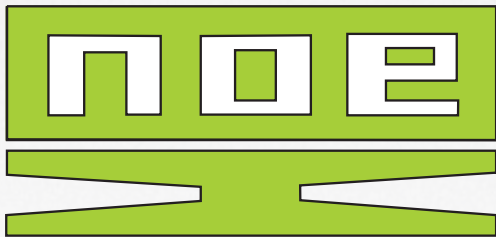


Skidders are specialized forestry machines, suited for hauling long trunks from thinnings and final fellings. They're equipped with a frontal blade, double-drum winches with different traction forces and optionally, for light terrain conditions, with a hydraulic crane, for suspending one end of the round wood on the back shield and stacking the logs on landing sites.

The constructive plus that these new generation machines are offering is the hydro-mechanical transmission which ensures high productivity and efficiency. The forest exploitation conditions in Romania make the skidder a very popular option among contractors.

The skidder line which Alser Forest offers to the Romanian market is made by the German manufacturer Otmar Noe GmbH.

For more information please visit the official Otmar Noe website: [www.noegmbh.de](http://www.noegmbh.de)





# Combi Machines



**Alser Forest**  
Soluții forestiere complete

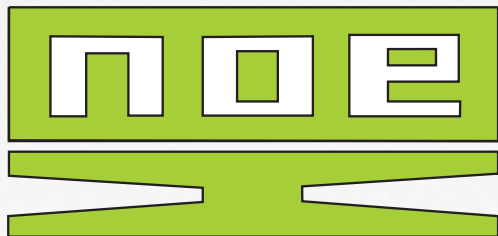


Combi machines are articulated forestry tractors with a 6wd or 8wd transmission, which can be found in technological fluxes of every kind, regardless of the type of cutting involved (thinnings or final fellings).

The advantage that these machines provide is the possibility of hauling both long wood (by pulling), with the help of the hydraulic clambunk fitted on the back axle and short wood by suspending the logs on the adjustable bunk structure of the chassis (replacing the hydraulic clambunk).

Alser Forest provides the Romanian market mixed vehicles made by the German producer Otmar Noe GmbH.

For more information please visit the official Otmar Noe website: [www.noegmbh.de](http://www.noegmbh.de)





# Skylines



**Alser Forest**  
Soluții forestiere complete



The skyline is a cable stationary installation with a sledge winch and a carriage and it is used in forest exploitation for retrieving and gathering the wooden mass from rough terrains, on medium and long distances from both thinnings and final fellings.

Due to the fact that the wooden mass is suspended, the skyline is a solution that complies with ecological requirements, by protecting the remaining standing trees, the soil and the hydrographic network.

Alser Forest delivers for the Romanian market skylines made by the Austrian manufacturer Gantner Seilbahnbau GmbH.

For more information please visit the oficial Gantner website:  
[www.gantner-cableways.com](http://www.gantner-cableways.com)





## Yarders



**Alser Forest**  
Soluții forestiere complete



The yarder is a mobile skyline installation with the driving unit fitted on the tractor, forestry truck chassis, trailer chassis or tracked chassis. Its main feature is the folding, telescopic (optional) mast which provides adequate height for the cables in the initial point of the line.

Due to the way in which the wood is transported, this solution is one that brings the minimum amount of damage to the standing trees. It is used in areas where the gathering of harvested wood is done on short to medium distances, in steep terrains, both uphill and downhill.

Alser Forest provides the Romanian market with Tower Yarders from Koller Forsttechnik GmbH Austria (world leader in this field).

For more information please visit the official Koller website: [www.kollergmbh.com](http://www.kollergmbh.com)





# Mini-Skidder



**Alser Forest**

Soluții forestiere complete



The mini-skidder is a tracked skidder used primarily in thinnings.

Its main advantages are the versatility and high productivity achieved with a reasonable fuel consumption. It provides an ecofriendly solution, the overall environmental impact being extremely low.

The mini-skidder can be configured in different ways, with different attachments considering the designated applications where it will be used, including forest fire fighting. Alser Forest offers to the Romanian market the tracked mini-skidder from Oxtrac.





# Log Lines



**Alser Forest**  
Soluții forestiere complete



Log lines are slope skidding installations utilized in the ecological gathering of the wooden mass from thinnings on steep slopes. With the aid of this technology wood gathering is done without harming other standing trees or the soil, its flexibility giving multiple ways of avoiding any obstacles.

With this type of installation round wood and fire wood is gathered. High productivity is achieved when gathering spruce.

Alser Forest offers the Romanian market Log Lines from TS-Holz GmbH Germania.

For more information please visit the official TS-Holz website: [www.ts-holz.com](http://www.ts-holz.com)





## Chippers



**Alser Forest**  
Soluții forestiere complete



The biomass chippers harness the wood residue from forestry exploitation (such as branches, general wood waste) and from timber processing and wood industrialization (such as saw wood waste).

These equipment are a must for the technological flux when harnessing the biomass from rapid growing wooden species defined by energetic tree plantations, the branches from cleaning the fruit trees inside orchards or harnessing the biomass from park tree surgeons. The chipping can have two economic destinations: as feedstock for producing pellets, briquettes, wood chip and fiber boards or as energy source for thermal or electric plants.

The way chipping tools are mounted (on a disc or on a drum) defines the chipping method and chipper category, each of them presenting their advantages considering raw wood material characteristics, chipping intensity, location and the final destination of the chips.

Alser Forest offers drum chippers from Kesla Oyj Finland and Heizomat GmbH Germany and disc chippers from Danish producer Linddana.

For more information please visit the official websites of Kesla: [www.kesla.fi](http://www.kesla.fi), Heizomat: [www.heizomat.de](http://www.heizomat.de) and Lindanna: [www.tpchipper.com](http://www.tpchipper.com)

**KESLA**

**Heizomat®**

**TP**



# Mulchers and Tillers

**Alser Forest**

Soluții forestiere complete



Mulchers and tillers are tractor attachments suitable for various applications in the forestry, agricultural, road construction and environment fields.

These equipment represent the ideal solution for shredding plant residue or bushes, for forest land reclamation, maintenance and recultivation of agricultural land, orchards or vineyards, maintenance of inland electricity transport, natural gas and oil, ski slopes maintenance and building, creating lines of defense against the spread of forest fires or vegetation, for stone crushing and ground stabilization, as well as road rehabilitation and construction.

Alser Forest provides the mulchers and tillers range of the world leader in the field: FAE Group Italy.

For more information please visit the official FAE website: [www.fae-group.com](http://www.fae-group.com)

**ADVANCED  
SHREDDING  
TECHNOLOGIES**



## Forestry Winches



**Alser Forest**

Soluții forestiere complete



Alser Forest offers forest winches from Königswieser Austria equipped with a three point hitch for agricultural tractors fitted for forestry purposes.

The traction force of these winches is between 3.5 and 8 tones.

For more information please visit the official Königswieser website:  
[www.kgd-seilwinden.com](http://www.kgd-seilwinden.com)





# Cables



**Alser Forest**  
Soluții forestiere complete



The traction cables for winches and skylines sold by Alser Forest bear the mark of German quality.

All cables are compact which gives them a longer usage period.



## Forestry Tyres



Alser Forest sells premium forest tires from Nokian and Trelleborg for all types of forestry tractors.

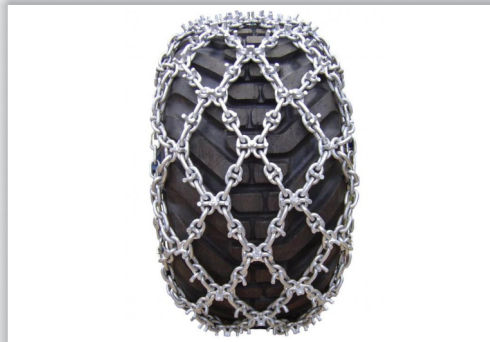
For more information please visit the official Nokian: [www.nokianheavytyres.com](http://www.nokianheavytyres.com) and Trelleborg: [www.trelleborg.com](http://www.trelleborg.com) websites.

**NOKIAN  
HEAVY TYRES**

  
**TRELLEBORG**



## Chains



The snow chains sold by Alser Forest come from a manufacturer with a vast experience in the field, Trygg Nøsted Kjetting from Norway.

The line envelopes all tire types and sizes for a wide range of forestry machines and trucks and various terrain conditions.

For more information please visit the official Trygg website: [www.trygg.no](http://www.trygg.no)

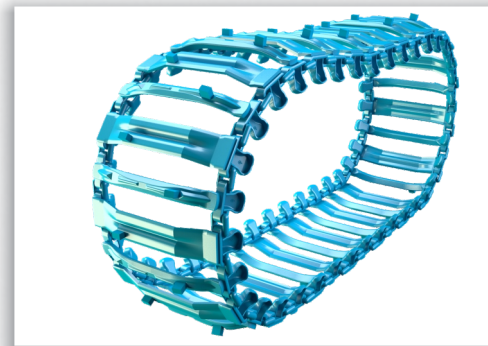




# Tracks

**Alser Forest**

Soluții forestiere complete



The forestry tracks from Olofsfors AB Sweden are made specifically for the articulated forestry tractors with 6wd or 8wd transmissions, with bogie type axles.

They are compatible with specific tire manufactures, wheels sizes or terrain conditions.

For more information please visit the official Olofsfors website: [www.eco-tracks.com](http://www.eco-tracks.com)







**Alser Forest**

Soluții forestiere complete

## After Sale Service



Alser Forest offers original spare and ware parts and technical maintenance and repair services during the warranty period and after it, for all the equipment, machines and installations sold.



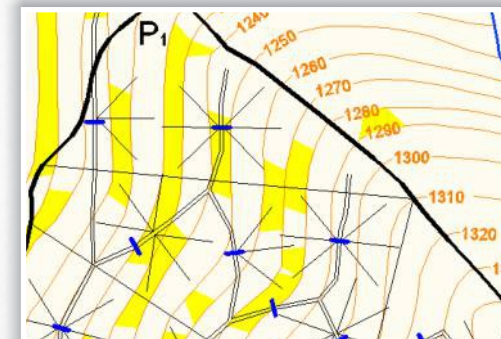




**Alser Forest**

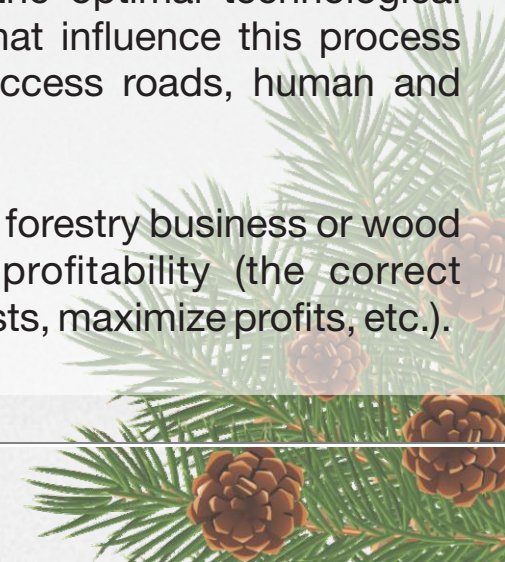
Soluții forestiere complete

# Consultancy



Alser Forest offers:

- consultancy and advice to Romanian companies which are interested in getting European subsidies for development activities in the field of forestry and wood processing.
- specialized consulting services for choosing the best technical solutions regarding the acquisition of machines, installations and equipment for harvesting and wood processing.
- specialized consulting services in order to develop the optimal technological structures for wood harvesting, according to the variables that influence this process (stand, the harvesting method, overall forestry conditions, access roads, human and material resources, project management etc.).
- specialized consulting services for companies inside the forestry business or wood industry in order to streamline and increase economic profitability (the correct management of capital investment risk, minimize production costs, maximize profits, etc.).



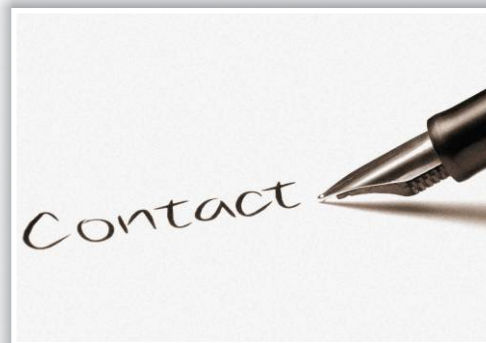




**Alser Forest**

Soluții forestiere complete

# Contact



## **Alser Forest SRL**

### **Mail Address**

Șoseaua Tărlungeni nr. 32  
505600, Săcele, Jud. Brașov, România

### **Commercial Department**

Sorin Șolomonean  
Mob: +4 0741 367 378  
Fax: +4 0268 249 908  
E-mail: [sorin@utilajedepadure.ro](mailto:sorin@utilajedepadure.ro)

### **Service and Technical Department**

Liviu Revnic  
Mob: +4 0751 165 215  
Fax: +4 0268 249 908  
E-mail: [liviu@utilajedepadure.ro](mailto:liviu@utilajedepadure.ro)